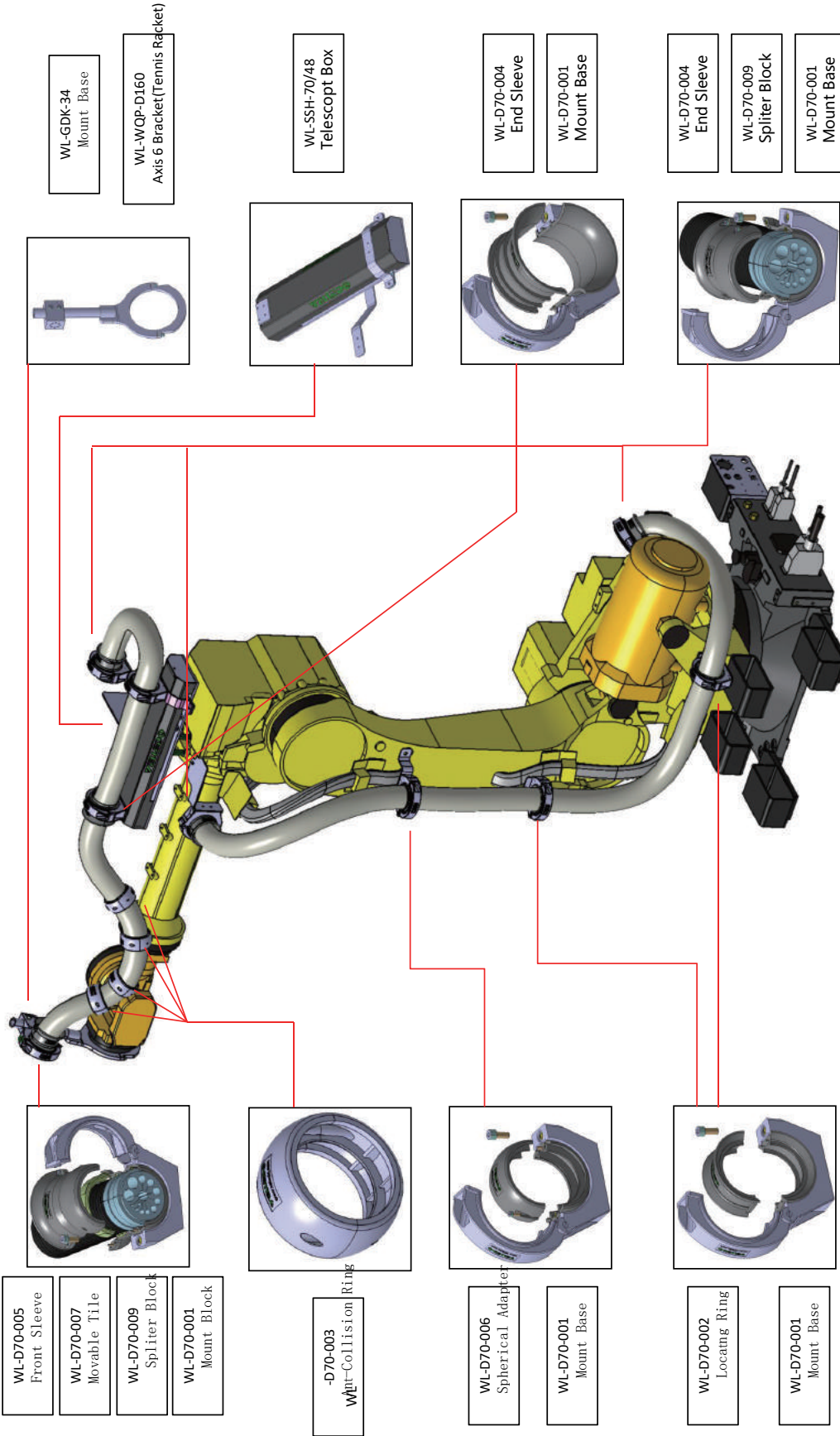
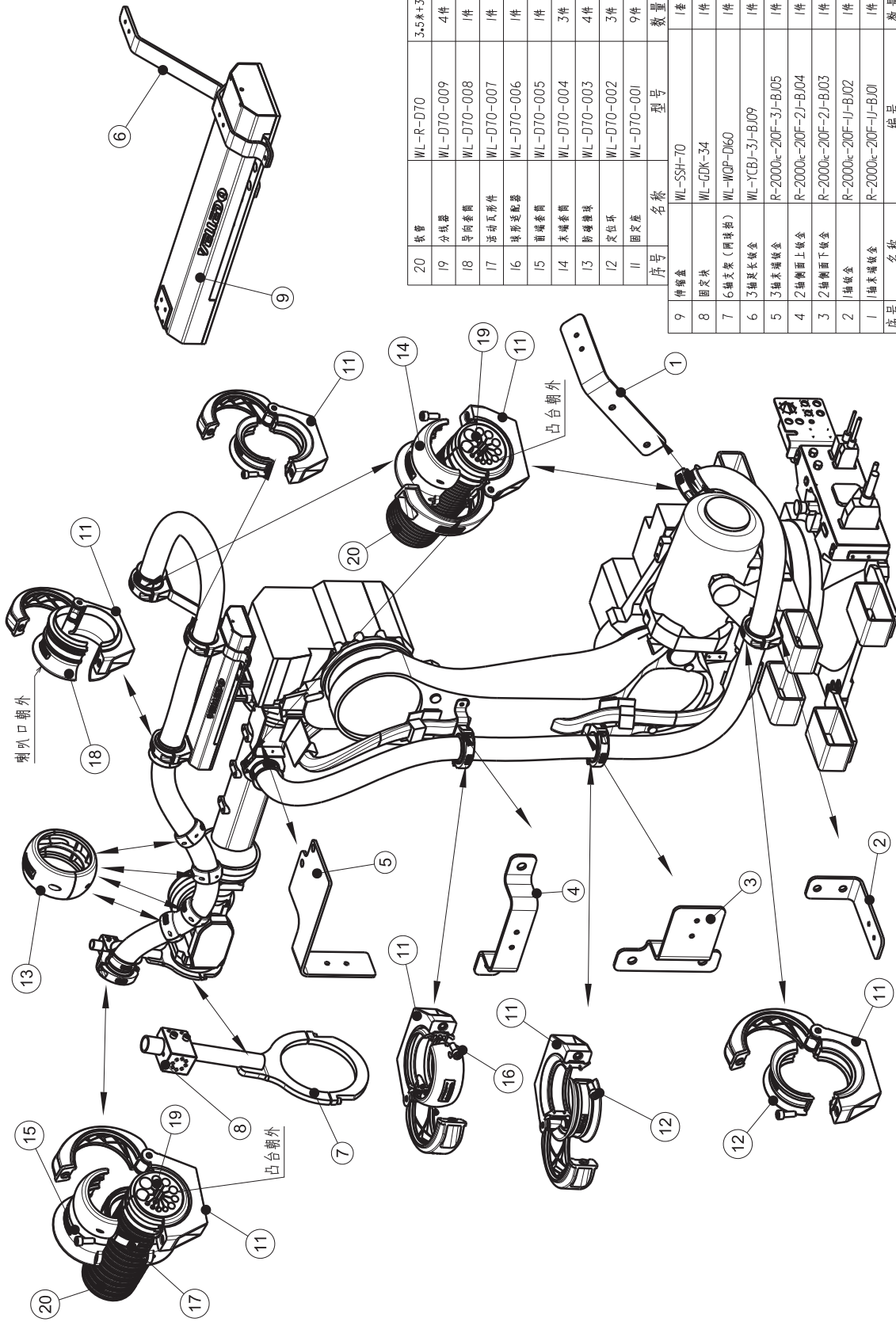


## FANUC R-2000ic-70 Hose- 2Section Telescopic Box



- Dresspack
- Bus Module
- Industrial Switches
- BusCable
- I/O JunctionBox
- M8 Connection
- M12 Connection
- 7/8 Connection
- D-SUB
- ValvePlug
- HeavyDuty Connector
- CableJoint
- CableEntry System
- USB Cable
- M23
- Customized Cordset
- BulkCable

# Robot DressPack



序号	名称	型号	数量
9	件箱盒	WL-SSH-70	1套
8	固定块	WL-GDK-34	1件
7	6轴支架 (四轴排)	WL-WQP-D160	1件
6	3轴超长磁盒	WL-YCJ-3J-BJ09	1件
5	3轴末端磁盒	R-2000c-20F-3J-BJ05	1件
4	2轴轴面上磁盒	R-2000c-20F-2J-BJ04	1件
3	2轴轴面下磁盒	R-2000c-20F-2J-BJ03	1件
2	1轴磁盒	R-2000c-20F-1J-BJ02	1件
1	轴末端磁盒	R-2000c-20F-1J-BJ01	1件
20	铁管	WL-R-D70	3.5米+3米
19	分线器	WL-D70-009	4件
18	导向套筒	WL-D70-008	1件
17	活动瓦形件	WL-D70-007	1件
16	球形适配器	WL-D70-006	1件
15	前磁套筒	WL-D70-005	1件
14	末端套筒	WL-D70-004	3件
13	除磁撞块	WL-D70-003	4件
12	定位环	WL-D70-002	3件
11	固定座	WL-D70-001	9件



Dresspack

Bus Module

Industrial Switches

BusCable

I/O JunctionBox

M8 Connection

M12 Connection

7/8 Connection

D-SUB

ValvePlug

HeavyDuty Connector

CableJoint

CableEntry System

USBCable

M23

Customized Cordset

BulkCable