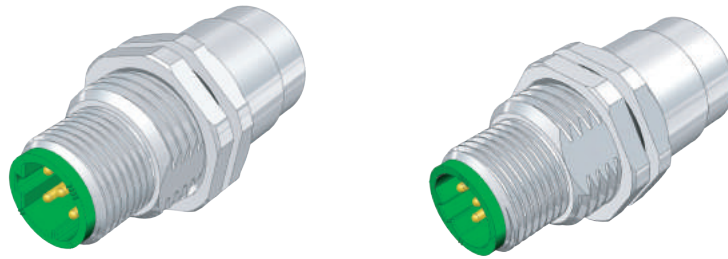


Bus protocol Cordset



转接头
Connector



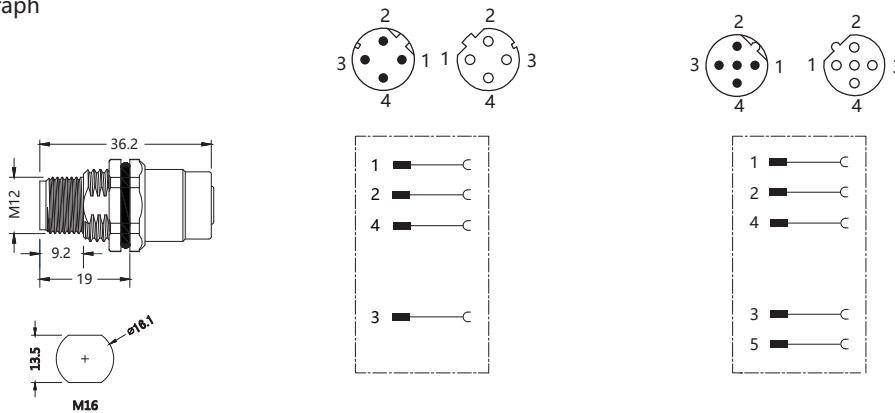
D-CODING

B-CODING



ISO 9001 (2015) QMS

Graph



TYPE

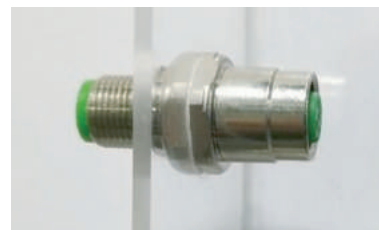
FL-M12-DM04/DF04(M16)

FL-M12-BM05/BF05(M16)

Standing goods

Length/Material Could be customized according to different enviroment ,like extrame tempreture and acid/alkali

Voltage	250V AC/DC
Current	4A
Ambient temperature	-25~+85°C
ProtectionClass(IEC 60529)	IP67



EntryConnector

